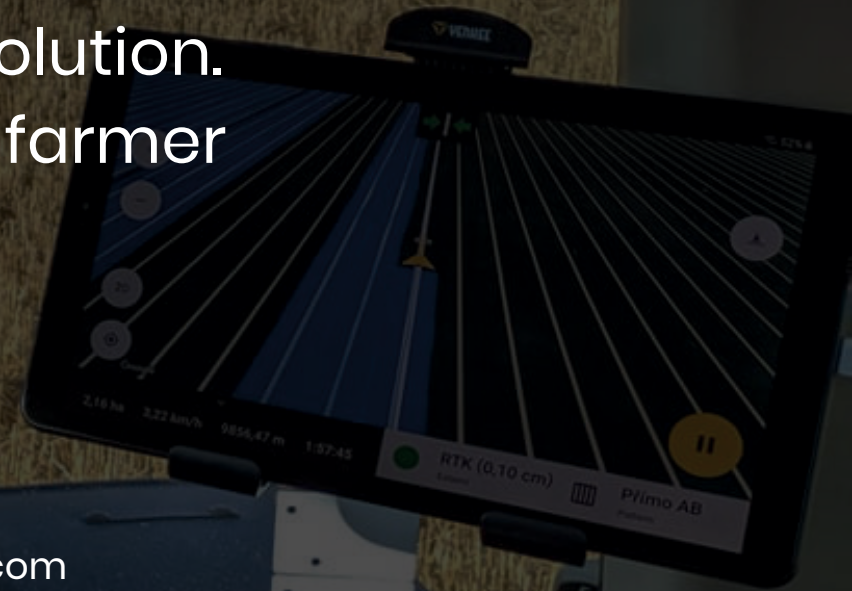




FieldBee GPS system

App based affordable solution.
High precision for every farmer

fieldbee.com // sales@fieldbee.com



ABOUT COMPANY

5 interesting facts about us

eFarmer B.V. is a agriculture automation company with more than 6 years of experience.

We have offices in the Netherlands and Ukraine and customers in 50 countries.

FieldBee^(TM) is our brand of affordable precision farming solutions which was created during crowdfunding campaign.

Collaboration with farmers is a key in our product development.

FieldBee products are created with farmers for farmers.

Why choose FieldBee?

- ✔ Better price
- ✔ Higher accuracy
- ✔ Free remote support
- ✔ Continuous improvement



Who are our customers?

Progressive farmers who:

- are interested in innovations
- are looking for new ways to conduct business
- want to constantly learn new things
- collaborate with each other globally
- care about the future



What do we offer?

FieldBee tractor GPS system utilises smartphones and an Internet of Things (IoT) architecture, making thus making the products affordable, modular and updatable.

STEP 1

FieldBee Tractor GPS Navigation App

No need to buy expensive terminals



Free and Premium – 119 euro/year

STEP 2

FieldBee RTK GNSS Receiver

Get the best farm machinery GPS with RTK signal



1 299 euro

STEP 3

Connect to RTK signal

Achieve high 1 cm precision from local NTRIP provider or FieldBee Base Station



Free or 1 699 euro

STEP 4

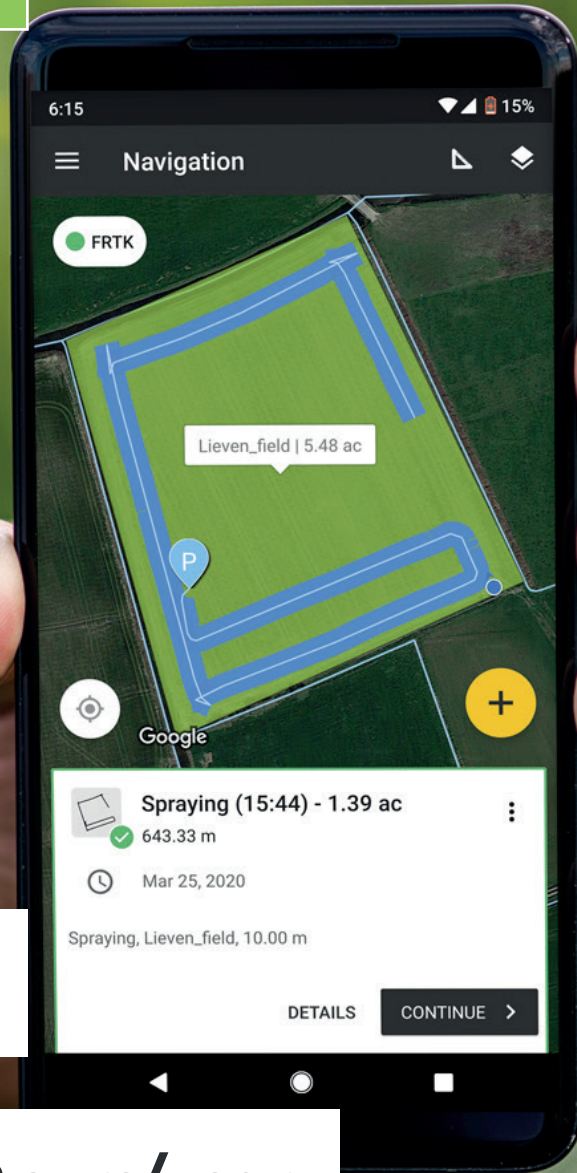
Autosteer system

Mechanic and hydraulic reliable autosteer with kits for 1000+ models



From 5 099 euro

STEP 1



Free

Paid 119 euro/year

FieldBee tractor GPS app

Advantages:

- No need to buy expensive terminals
- Constant improvements with new app updates
- Functionality can be customised to suit your needs

Main functionality:

- Tractor navigation with 5 patterns*
- Field record keeping
- Autosteer functionality

** New patterns are being added with updates*

Download the free app _____



STEP 2



1 299 euro

FieldBee L2 RTK GNSS receiver

The best farm machinery GPS receiver with RTK signal, developed during crowdfunding campaign

Benefits:

- High and stable accuracy
- Easy to install
- Easy to change between tractors
- Upgradable to autosteer

Main tech specs:

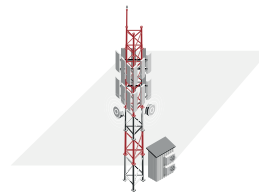
- 1 cm accuracy
- 20+ km signal radius via WiFi
- 2+ km via LoRa (radio)
- First RTK signal in <30 sec

Achieve 1 cm precision

How?

Connect to local RTK signal provider

Price: Free in many countries



Connect to FieldBee Base Station

Price: 1 699 euro

Why?

- Use during all field operations including planting
- With all crops and vegetables
- Drones, soil sampling and even robots
- Maximise your benefits from precision farming

STEP 3



1 699 euro

STEP 4

Mechanic

FieldBee Tractor autosteer system

Benefits:

- Get hands free parallel driving
- With the highest possible accuracy
- Even rows also on hilly fields
- Do more with no stress
- Save up to 30% of your costs
- Pays back from 10 Ha



Money back
30 days



Warranty
2 years

Hydraulic

Mechanic autosteer kit

Benefits:

- Easy to install
- Easy to change between machines
- Fits a wide selection of vehicles
- Has built-in terrain compensation

Main components:

- ECU - controller
- MDU - steering actuator
- Anti-rotation bracket
- A set of cables



from 5 099 euro

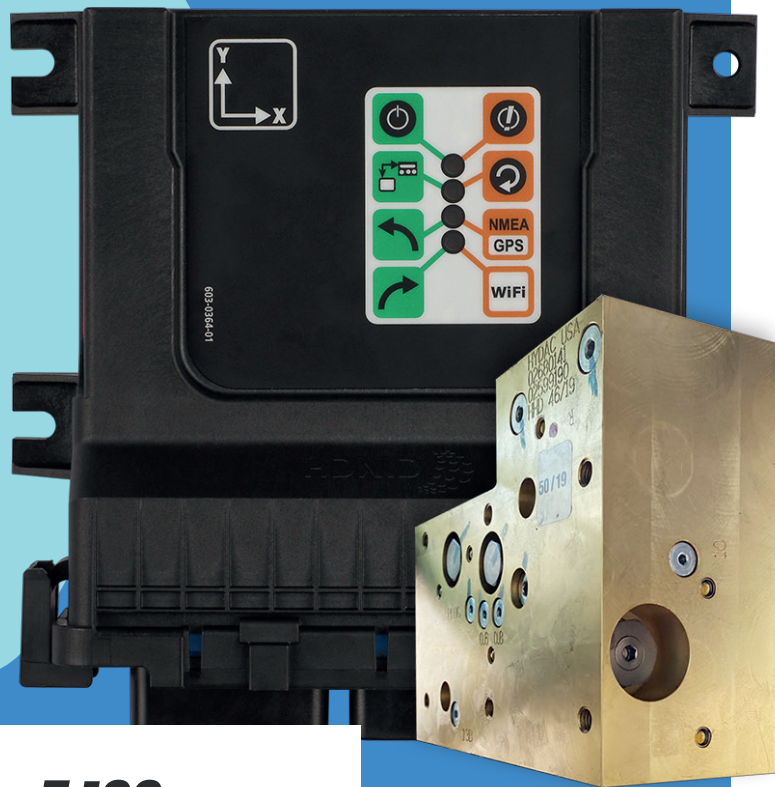
Hydraulic autosteer kit

Benefits:

- Very high precision
- Fits older tractors and with steering column issues
- Has built-in terrain compensation
- More comfort for operator

Main components:

- ECU - controller
- Hydraulic valve kit
- Wheel angle sensor
- Foot Switch
- Set of cables



from 5 199 euro

Free remote service & free updates



- Help with initial set up
- New functionality with free app updates
- Remote fixing of issues

Visiting your farm for installation and education by FieldBee specialist is also possible (optional).



**Order now and start saving your time and costs already
this season**

Email: sales@fieldbee.com

Phone: **+49 2651 95 29 735**

WhatsApp: **+38 050 224 87 22**

or find us in social

