



FieldBee
precision for every farmer

FieldBee PowerSteer

Affordable, simple, reliable

A new generation in tractor guidance

The **FieldBee PowerSteer** is an ultra-modern retrofit tractor guidance system. We designed it based on latest drone technology with four main goals in mind:

- Make it **reliable**.
- Make it **affordable**.
- Make it **super simple**.
- Make it **extensible**.

We made it!

We're happy to say: **PowerSteer is here.**



What's New?



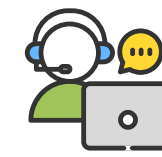
Improved design

less components, new FieldBee all-in-one controller and new steering wheel



Easier to install

new steering wheel motor with 15 minutes self-installation instead of 3-6 hours



Easy to support

full remote diagnostics. Fewer components, simple design.



Guaranteed stability

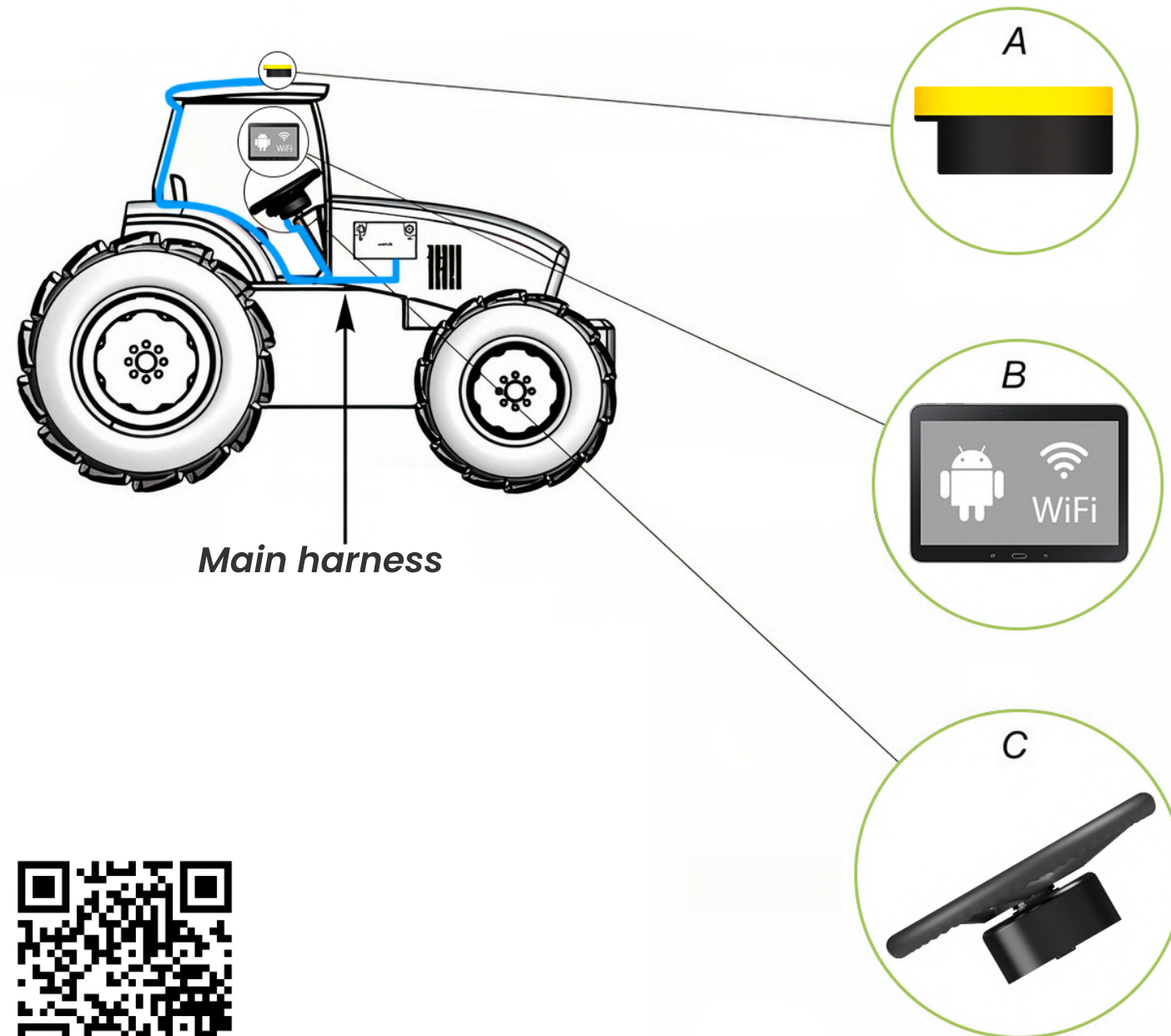
new rugged 10" android tablet certified by FieldBee with fewer 3rd party updates



Easier-to-use

Made so grandparents will easily get it.

System components



[See full datasheet](#)

Controller

- High precision electronic controller that provides automatic steering capability to the vehicle.
- Receives guidance information from the Android app and sends steering commands to the vehicle.

Android app on phone/ tablet

Drive in straight, curve, headland and saved patterns with high precision.

- Map your fields and obstacles.
- Automatically capture field records while driving.
- Get reports about fieldwork in Excel and PDF formats.
- Holds multiple vehicles and implements profiles for easy hardware switching between vehicles without re-calibration.

FieldBee PowerWheel

Consists of 4 main parts:

- A sleek and robust replacement to the original steering wheel
- Install in under 15 minutes
- Easily switch between vehicles
- High quality materials and design
- Seamless manual override
- Fits all tractor steering shaft/ column dimensions

Advantages



±2cm accuracy, use any RTK signal



Initial setup time less than 1 hour



More affordable. Allows a very quick return on investment



Suitable for all tractor models which are front-wheel steer



30 days moneyback guarantee



2 years warranty



PowerSteer Offers Presale ends October 31

PowerSteer Basic



- FieldBee all-in-one controller (new)
- FieldBee PowerWheel
- Installation kit (antirotation bracket, power adaptor and harness)
- Using own Android phone/ tablet with Lite app version

Promotion price: **€3790**

Normal price: **€4200**

PowerSteer Complete



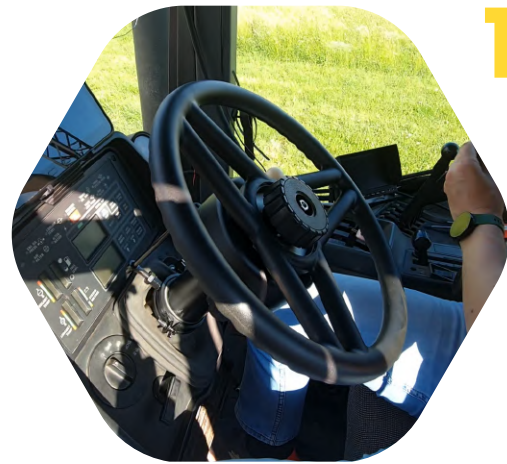
- Everything in PowerSteer Basic, plus:
- FieldBee PowerTablet for increased stability and a fully controlled environment

Promotion price: **€4490**

Normal price: **€4900**

How to set up the system

Steps:



1 Replace steering wheel with PowerWheel



2 Install anti-rotation bracket



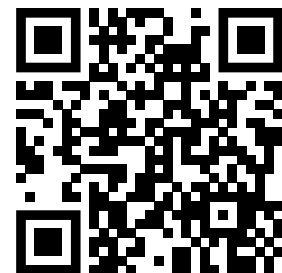
3 Install FieldBee controller on the tractor's roof



4 Install SIM card to the tablet, install tablet with dock inside the cabine



5 Activate, connect & calibrate



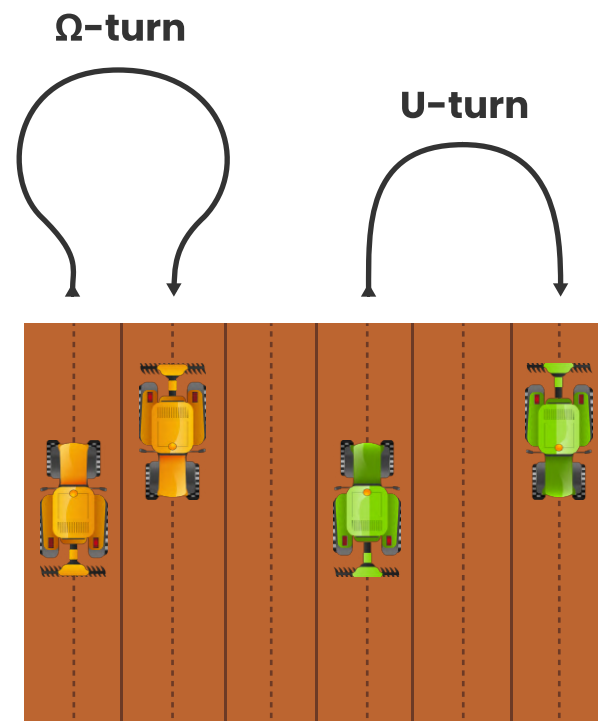
[watch installation video](#)

Coming soon to PowerSteer



ISOBUS

Will allow unlocking smart implement control apps, coming in 2023-4.



Automatic U turns
Coming in Spring 2023



Talk to us

PowerSteer is now on pre-sale!

[GET OFFER](#)




PowerSteer is an EU-quality advanced system by an experienced company, at a highly attractive price.




Ordering in the presale enables us to keep prices low by avoiding expensive bank financing for production costs.



And most importantly, participating in the pre-sale supports FieldBee in its journey to make precision farming technologies affordable for every farmer in the world.

 Laan van Kronenburg 14, 1183 AS
Amstelveen, Netherlands

 +31 62 832 89 00

 fieldbee.com

 +31 61 872 01 89

 info@fieldbee.com

